

# Park Row



**Moat Way, Brayton, Selby, YO8 9TE**

**Offers Over £130,000**



**\*\* CLOSE TO SCHOOLS \*\* OPEN PLAN LOUNGE KITCHEN AREA \*\*** Situated in the village of Brayton, this Ground Floor apartment briefly compromises: Lounge Area, Kitchen Area, two bedrooms and Shower Room. **VIEWING IS HIGHLY RECOMMENDED TO FULLY APPRECIATE THIS PROPERTY ON OFFER. RING US 7 DAYS TO BOOK A VIEWING. 'WE OPEN UNTIL 8PM MONDAY TO THURSDAY, 5.30 FRIDAYS, 5.00 SATURDAYS AND 11.00 - 3.00 SUNDAYS'.**











## Property Summary

Located in the desirable village of Brayton, this modern two-bedroom ground-floor apartment offers comfortable and convenient living. The property boasts a spacious open-plan lounge and kitchen area, creating a bright and airy living space, along with a well-appointed shower room. Externally, the apartment benefits from off-street parking, adding to its practicality. Ideally situated close to local amenities, transport links, and scenic countryside walks, this property is perfect for first-time buyers, downsizers, or investors.

## GROUND FLOOR ACCOMMODATION

### Lounge Area

14'2" x 13'9" (4.33m x 4.21m)

### Kitchen Area

8'11" x 8'4" (2.74m x 2.56m)

### Bedroom One

13'9" x 8'4" (4.20m x 2.56m)

### Bedroom Two

8'5" x 7'6" (2.57m x 2.30m)

### Shower Room

9'5" x 5'1" (2.88m x 1.55m)

## DIRECTIONS

Leave Selby on the A19 Doncaster Road through the village of Brayton. Just before the single pedestrian crossing turn right onto Foxhill Lane and then left onto Moat Way. The property can be clearly identified by a Park Row 'For Sale' board.

## LOCAL AUTHORITY, TAX BANDING AND TENURE

Tenure: Leasehold

Local Authority: North Yorkshire Council

Tax Banding: B

Please note: The Tenure, Local Authority and Tax Banding for the property have been advised by the Vendor or obtained from online sources. We strive to ensure these details are accurate and reliable, however, we advise any potential buyer to carry out their own enquiries before proceeding.

## UTILITIES, BROADBAND AND MOBILE COVERAGE

Electricity: Mains

Heating: Mains

Sewerage: Mains

Water: Mains

Broadband: Ultrafast

Mobile: 4G

Please note: The Utilities, Broadband and Mobile Coverage for the property have been advised by the Vendor or obtained from online sources. We strive to ensure these details are accurate and reliable, however, we advise any potential buyer to carry out their own enquiries before proceeding.

## MEASUREMENTS

These approximate room sizes are only intended as general guidance. You must verify the dimensions carefully before ordering carpets or any built-in furniture.

## VIEWINGS

Strictly by appointment with the sole agents.

If there is any point of particular importance to you we will be pleased to provide additional information or to make any further enquiries. We will also confirm that the property remains available. This is particularly important if you are travelling some distance to view the property.

## MAKING AN OFFER

In order to comply with the Estate Agents (Undesirable Practises) Order 1991, Park Row Properties are required to verify "the status of any prospective purchaser... This includes the financial standing of that purchaser and his ability to exchange contracts". To allow us to comply with this order and before recommending acceptance of any offers, and subsequently making the property 'SOLD' each prospective purchaser will be required to demonstrate to 'Park Row Properties' that they are financially able to proceed with the purchase of the property.

We provide truly Independent Mortgage Advice. Unlike many companies we are not tied, and more importantly not targeted to any Lender. We have instant on-line access to over 1000 mortgage deals provided by over 100 Lenders ensuring we are unbeatable when identifying and recommending your new mortgage or re-mortgage requirements.

Your home is at risk if you do not keep up repayments on a mortgage or other loan secured on it. Written quotations available on request. Life assurance is usually required. To arrange a no obligation appointment please contact your local office.

## OPENING HOURS

CALLS ANSWERED :

Mon, Tues, Wed & Thurs - 9.00am to 8.00pm

Friday - 9.00am to 5.30pm

Saturday - 9.00am to 5.00pm

Sunday - 11.00am to 3.00pm

TO CHECK OFFICE OPENING HOURS PLEASE CONTACT THE RELEVANT BRANCHES ON:

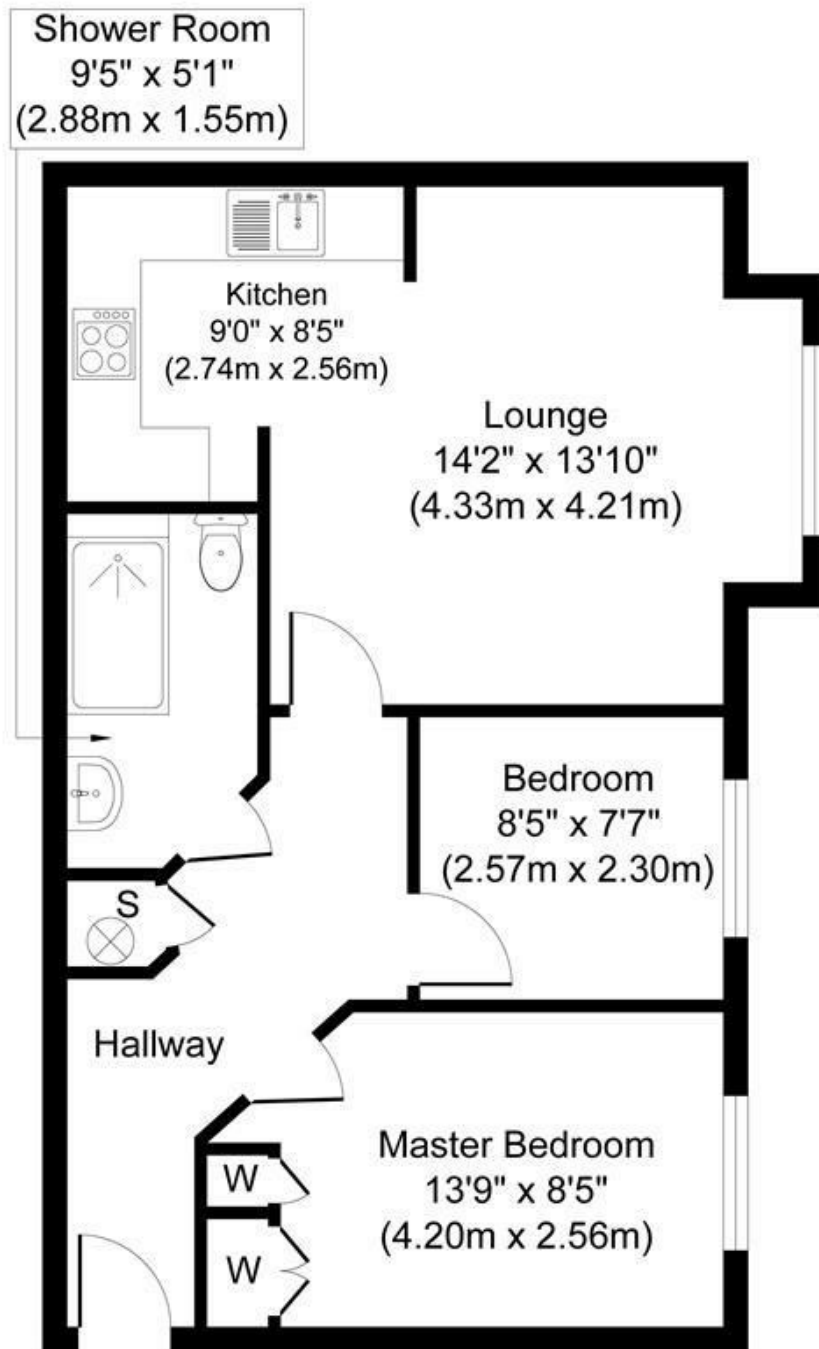
GOOLE - 01405 761199

SELBY - 01757 241124

SHERBURN IN ELMET - 01977 681122

PONTEFRACT - 01977 791133

CASTLEFORD - 01977 558480



**Approximate Floor Area**  
**548 sq. ft**  
**(50.95 sq. m)**

Whilst every attempt has been made to ensure the accuracy of the floor plan contained here, measurements of doors, windows, rooms and any other items are approximate and no responsibility is taken for any error, omission, or mis-statement. The measurements should not be relied upon for valuation, transaction and/or funding purposes. This plan is for illustrative purposes only and should be used as such by any prospective purchaser or tenant. The services, systems and appliances shown have not been tested and no guarantee as to their operability or efficiency can be given.

Copyright V360 Ltd 2025 | [www.houseviz.com](http://www.houseviz.com)





T 01757 241124  
W www.parkrow.co.uk

14 Finkle Street, Selby, North Yorkshire, YO8 4DS  
selby@parkrow.co.uk

